

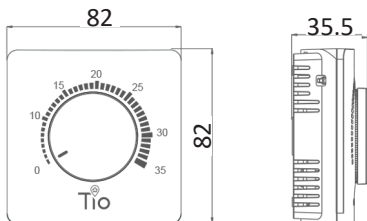
## Dial thermostats

Perfect for water heating systems, these dial thermostats offer temperature adjustability between 0°C - 35°C. LED indication when heating is activated.



Product Code	Product Description
TIODIA0004	230v on-wall dial thermostat
TIODIA0004s	230v on-wall dial thermostat with floor sensing

### External dimensions (mm)

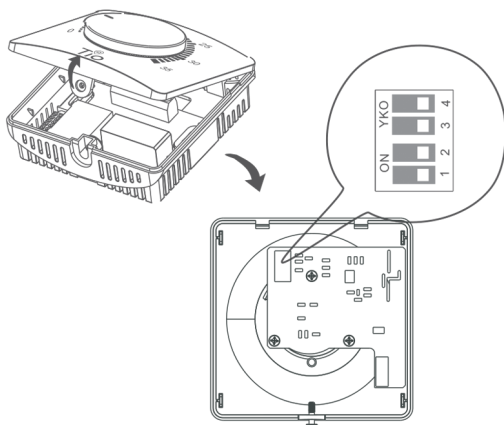


International universal electronic heating thermostat can be installed directly on the wall. The temperature range is 12~35°C. Heating is on when the indicator lights up. Can be applied to automatic temperature control of heating system. It meets the high requirement for comfort, safety and energy-saving

Model	Current	Control Type List
TIODIA0004(s)	3A	Water valve, radiator or electric heating valve

### Parameters

- Voltage: 230V
- Consumption: <2W
- Temp. range: 12-35°C
- Temp. switch deviation: Default 1°C
- Ambient temperature: 0~50°C
- Protection class: IP20
- Load capacity: 3A
- Connecting cable: RVV0.5
- Housing material: PC+ABS



Sensor choosing and floor limit sensor setting: On the back of the product a switch can be used to determine the sensing option: built-in and/or limitation floor sensing. Modifying the settings is as follows:

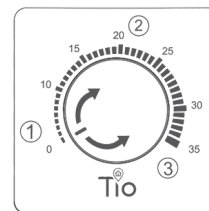
<p>Built-in and floor sensor floor temperature limited in 30°C.</p>	<p>Built-in and floor sensor floor temperature limited in 40°C.</p>	<p>Built-in and floor sensor floor temperature limited in 55°C.</p>
---	---	---

### Description

Room temperature is adjusted by controlling the valve switch. The temperature increases the more you turn the knob. Set the temperature with the knob to desired temperature. Annular red indicator will light up when heating. Please turn the knob to the low position when leaving for long periods of time to save energy.

### Operating Instructions

- Switch OFF
- Comfortable Position (20°C)  
Temperature setting: 10~35°C



- Annular red indicator light: Light will appear when switched on, and then turn off. Light is on when heating is on.

### Selection of installation location

Thermostat should be installed on the wall where the air flows freely. Thermostat installation location should be free of other heat sources (including sunlight), airflow from door and windows.

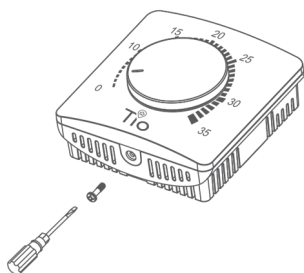
### Fault phenomena and exclusion

Fault phenomena	Solution
No light when switched ON	Power cord contact failure or no power supply
Not heating up	Set temperature too low or sensor contact failure. Potential heat source near sensor.
Flashing heating light	Sensor not connected properly or faulty. Replace if needed.

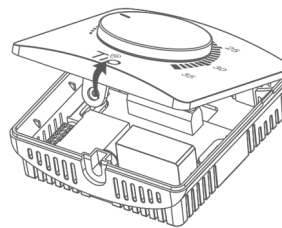
<p>Built-in sensor</p>	<p>Floor sensor</p>
------------------------	---------------------

Installation Diagram

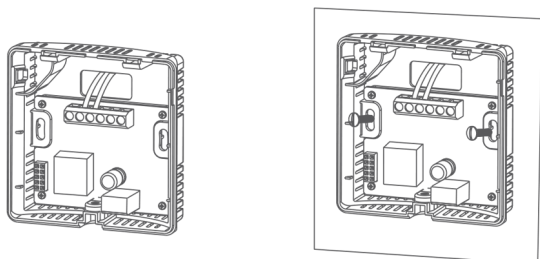
1 Remove the screw at the bottom of the thermostat using a screwdriver.



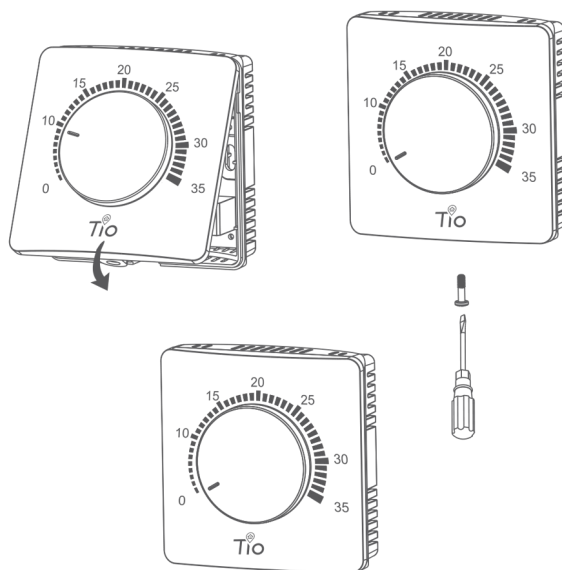
2 Open the front panel as shown in the following picture.



3 Connect the wires correctly according to the wiring diagrams and fix the power base to the cassette with screws.

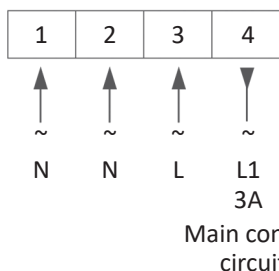


4 Close the front panel and tighten the screw as shown in the following pictures to finish installation.



System Connection Diagram

TIODIA0004(s)



Installation Notes

Power must be off during installation.  
 Please connect the wires correctly according to diagram.  
 It's better that the installation height is 1.4m or on the same level as other wall switches.  
 Do not install thermostat in non-ventilated locations (e.g behind a door).  
 Sundries like water, cement slurry and metal particles are forbidden from going inside the thermostat as these will destroy it.

Our TIODIA0004S model, allows users to incorporate an external sensor for use in areas such as bathrooms. All other features are the same as the TIODIA0004 model.

Note:

This thermostat can be used in full load operation at a place whose altitude is no higher than 2,500m. For a place whose altitude is between 2,500 and 4,200m, the nominal power of external load should be no bigger than 80% of the nominal power of this product.